



FMINDK53 Fitting Instructions



Please thoroughly read through and familiarise yourself with these instructions in their entirety prior to beginning any part of the installation process of any component. Please also ensure the vehicle and engine has cooled down sufficiently to avoid risking possible skin burns or other injury.

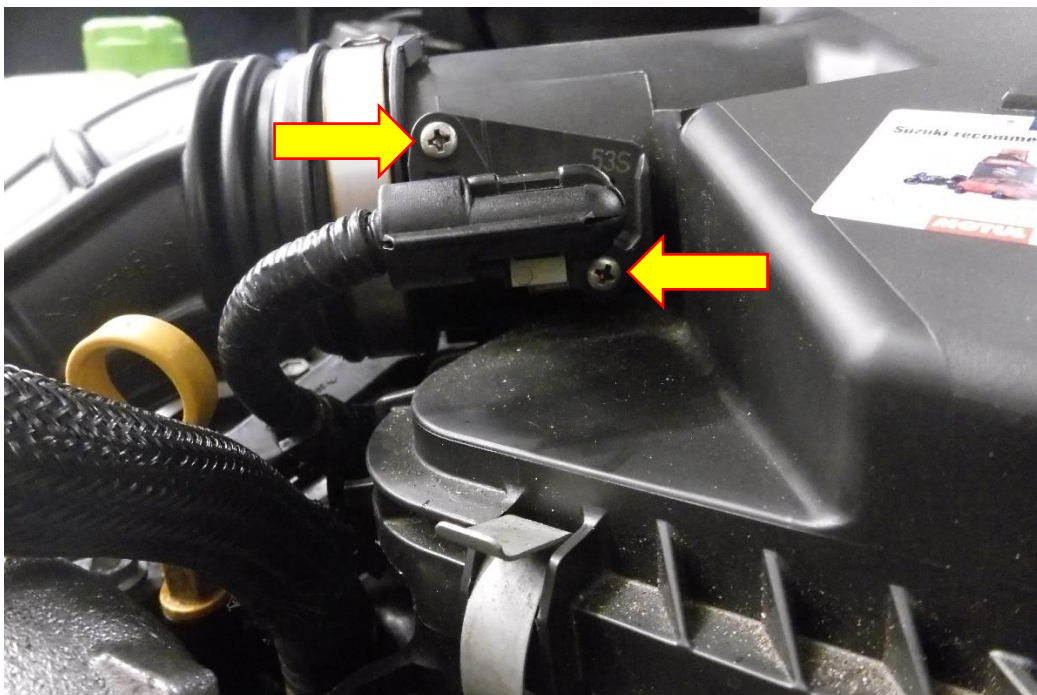
TOOLS NEEDED:

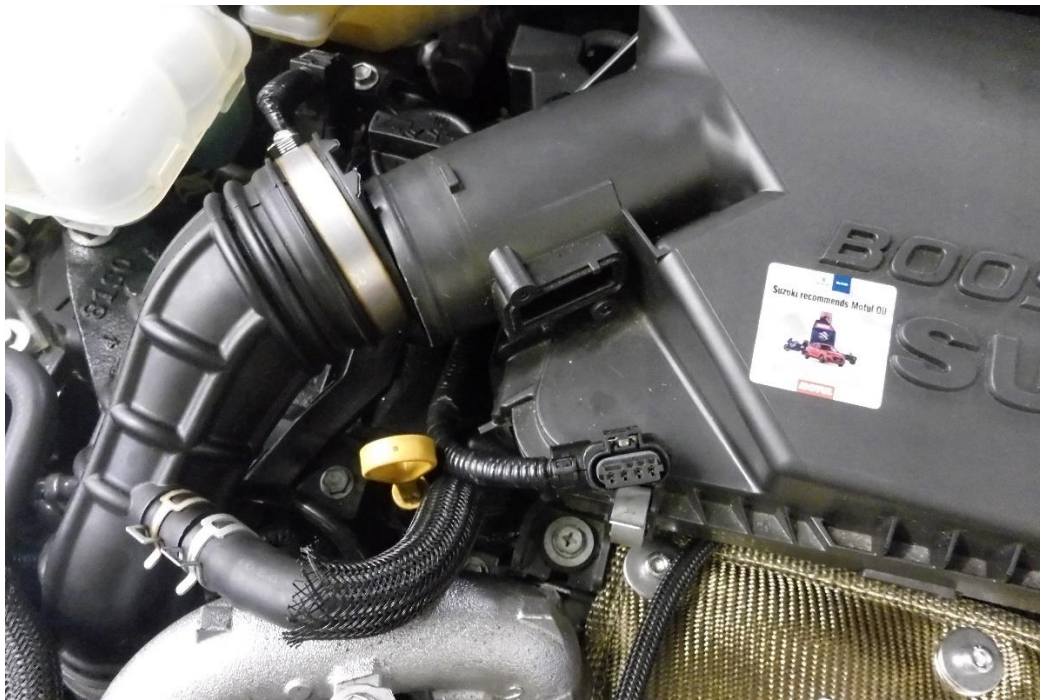
- Long nose pliers.
- 3/5mm Allen key
- 7/8/10mm Socket and ratchet
- Pozi blade screwdriver
- Sharp knife

1. Open the bonnet and locate the inlet pipe. Using an 8mm socket and ratchet loosen the hose clamp attaching the OE inlet hose to the airbox.

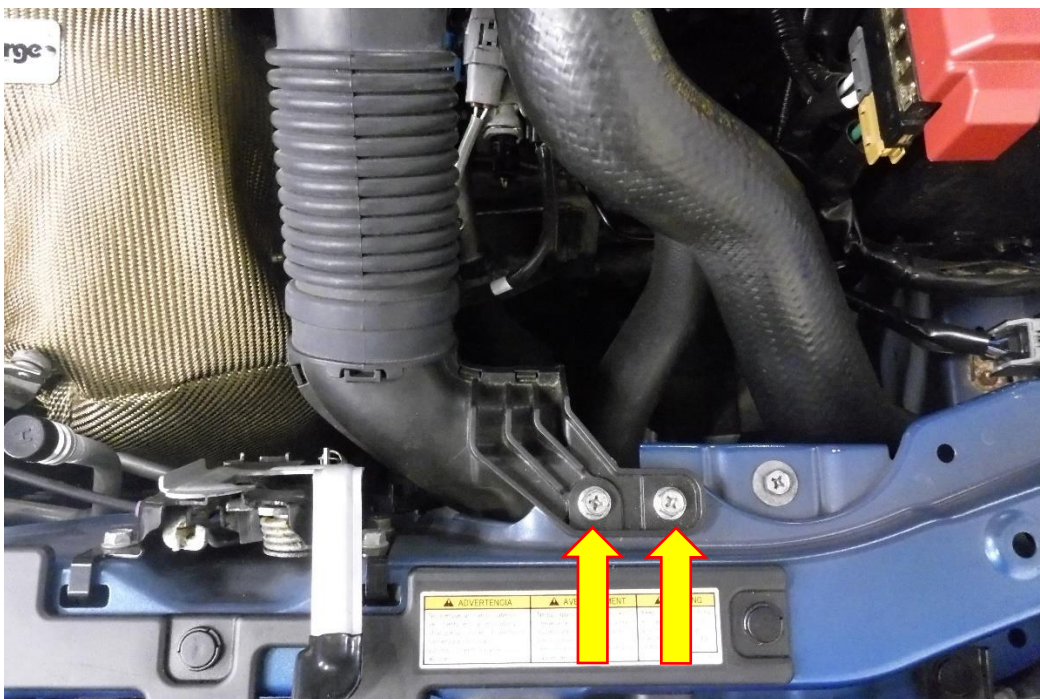


2. Unplug the MAF sensor by depressing the tab, then using a pozi drive screwdriver remove the two fasteners attaching the sensor to the airbox. The MAF sensor will now remove from the airbox.

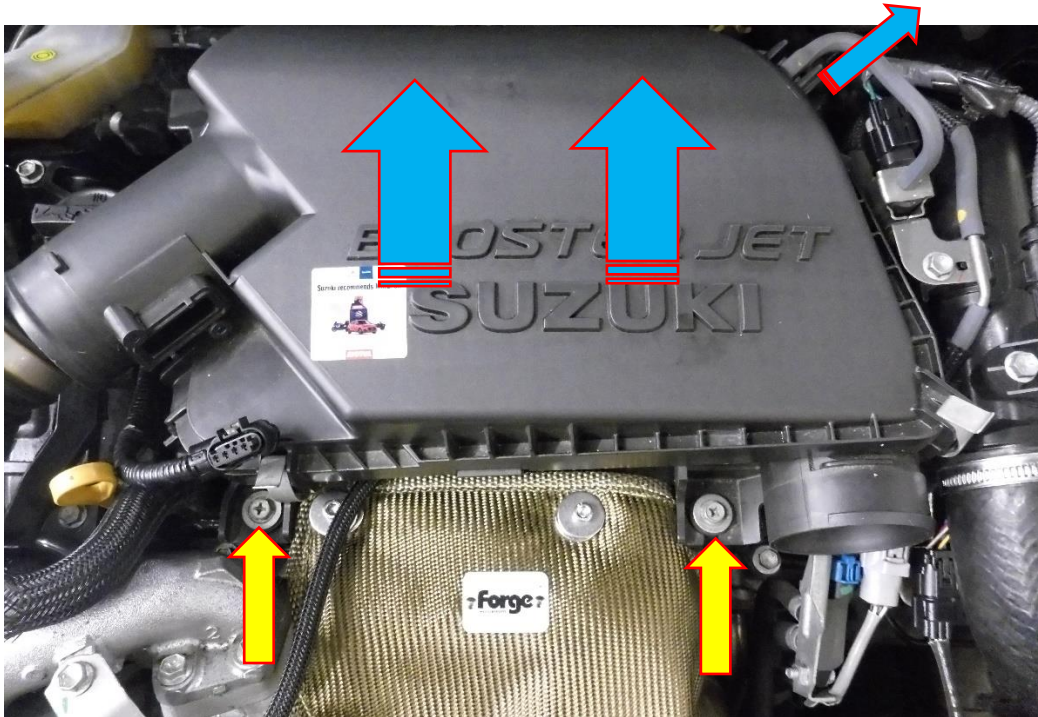




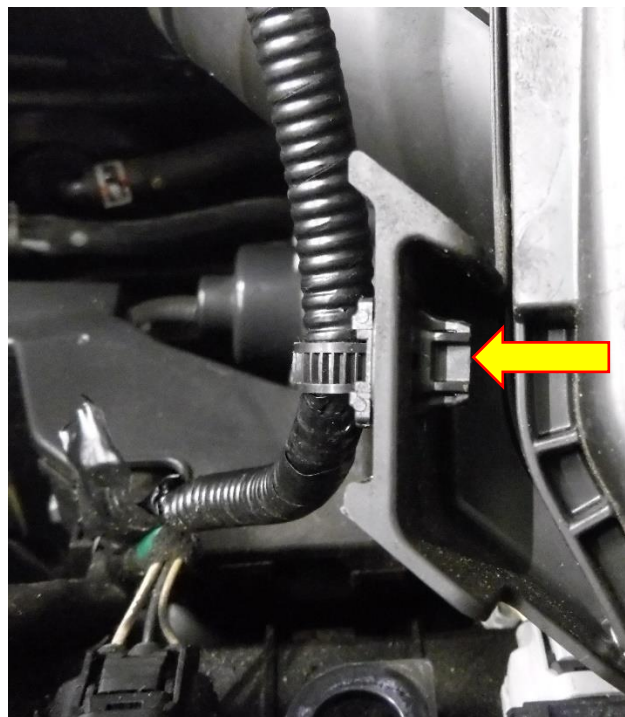
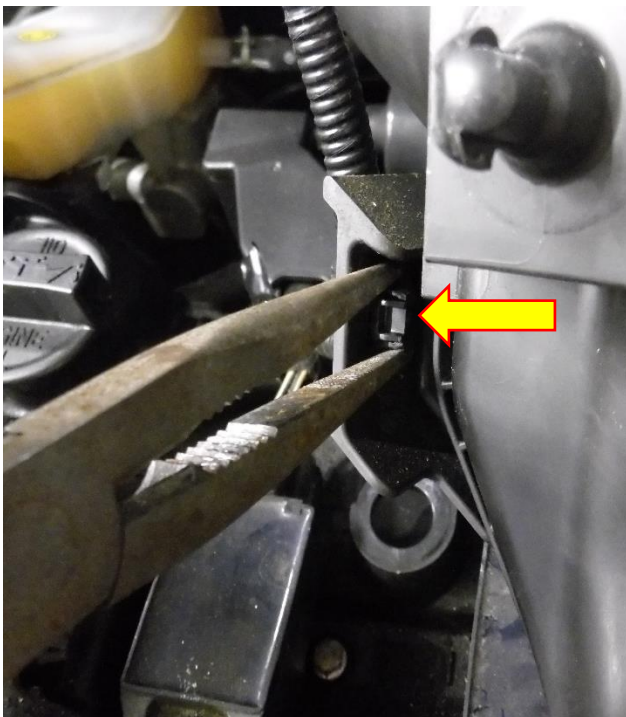
3. Using a 10mm socket and ratchet remove the X2 M6 fasteners attaching the air duct to the slam panel, the duct will now pull away from the air box.



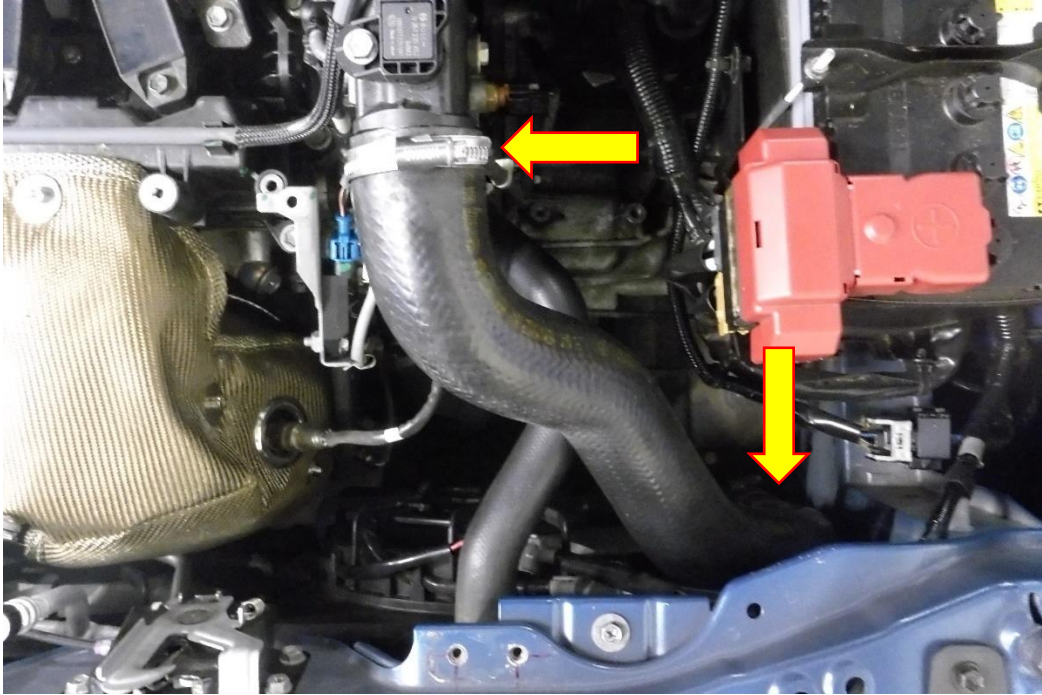
4. Pull the vacuum pipe attached to the airbox to disconnect it. Using a 10mm socket and ratchet remove the X2 M6 fasteners attaching the airbox to the engine. The airbox will now lift out of its mounting points.



5. With the airbox removed from its mounting points use long nose pliers to release the X2 clips attaching the MAF loom to the airbox as pictured below.



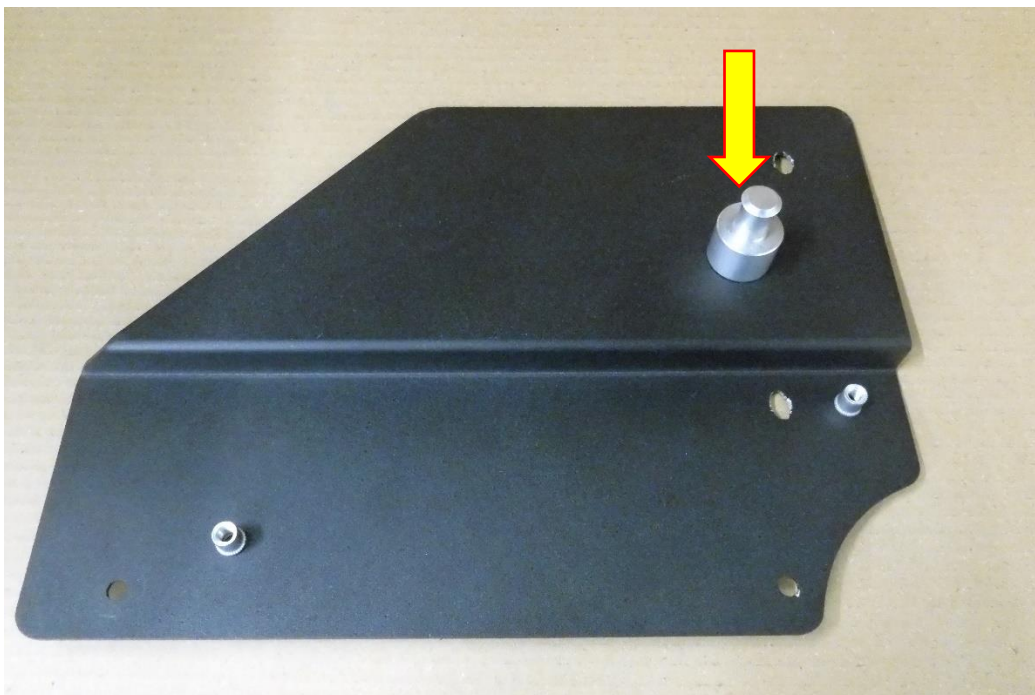
- Using an 8mm socket and ratchet loosen X2 hose clamps securing the boost hose. The hose can now be removed from situ.



- Screw in place X2 rubber mounting pegs from the FMINDK53 kit where the OE are box fasteners located from step 4.



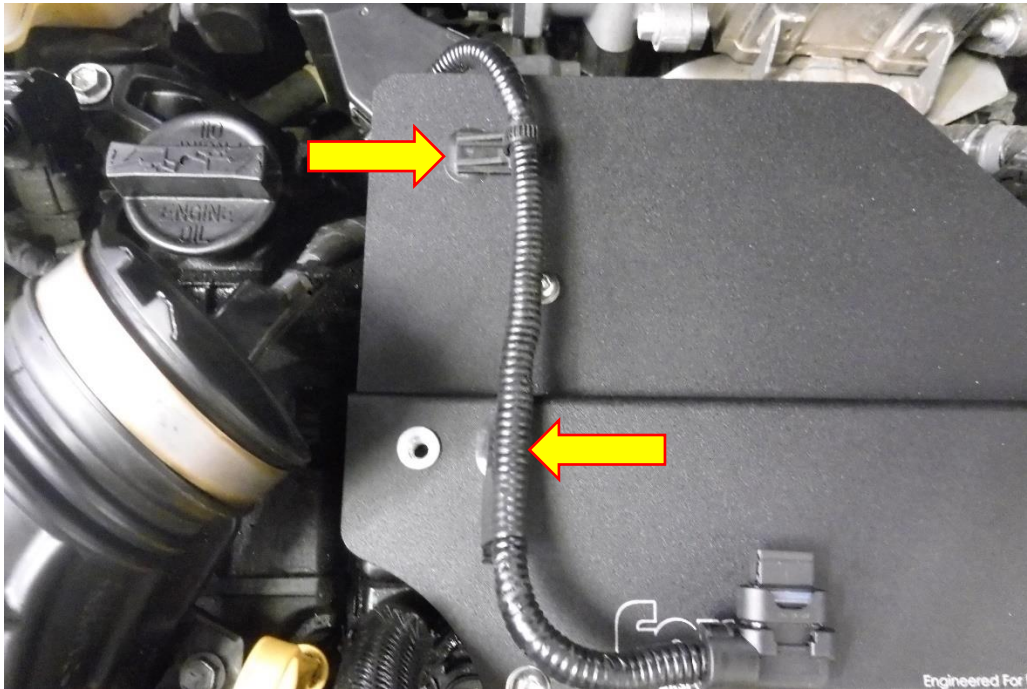
- Using a 5mm Allen key attach the supplied M6x8 button head fastener, M6 washer and alloy mounting peg to the mounting plate in the same location as shown in the picture below.



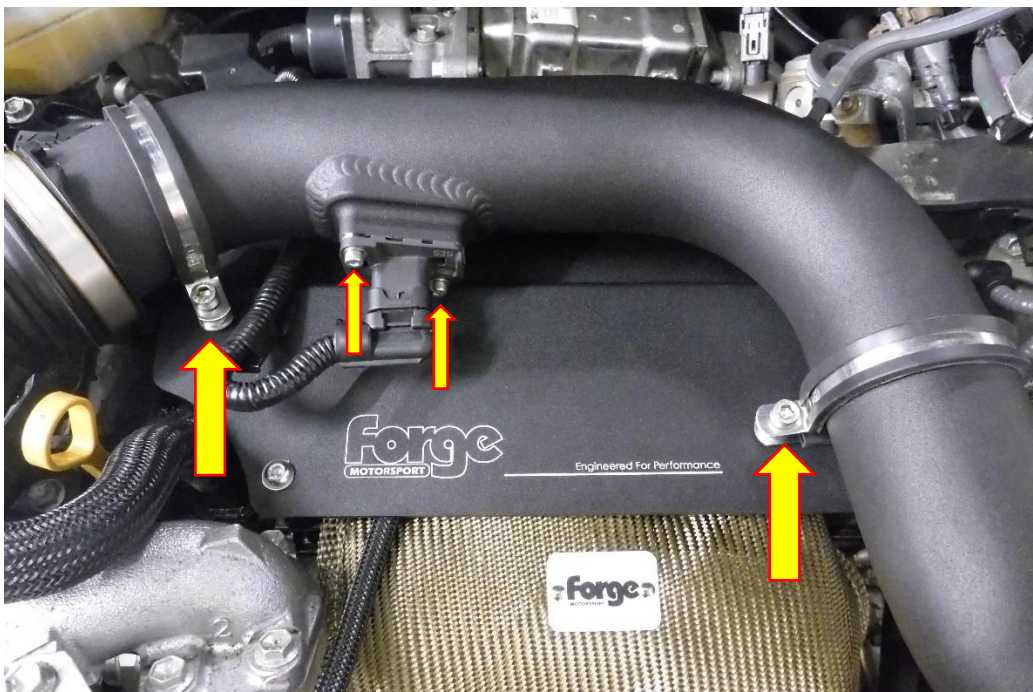
- Using a 5mm Allen key attach the mounting plate to the top of the engine using the supplied 2X M6x8 button fasteners and M6 washers. These fasteners locate into the rubber mounting pegs fitted in step 7. The alloy mounting peg fits into the original airbox rubber grommet.

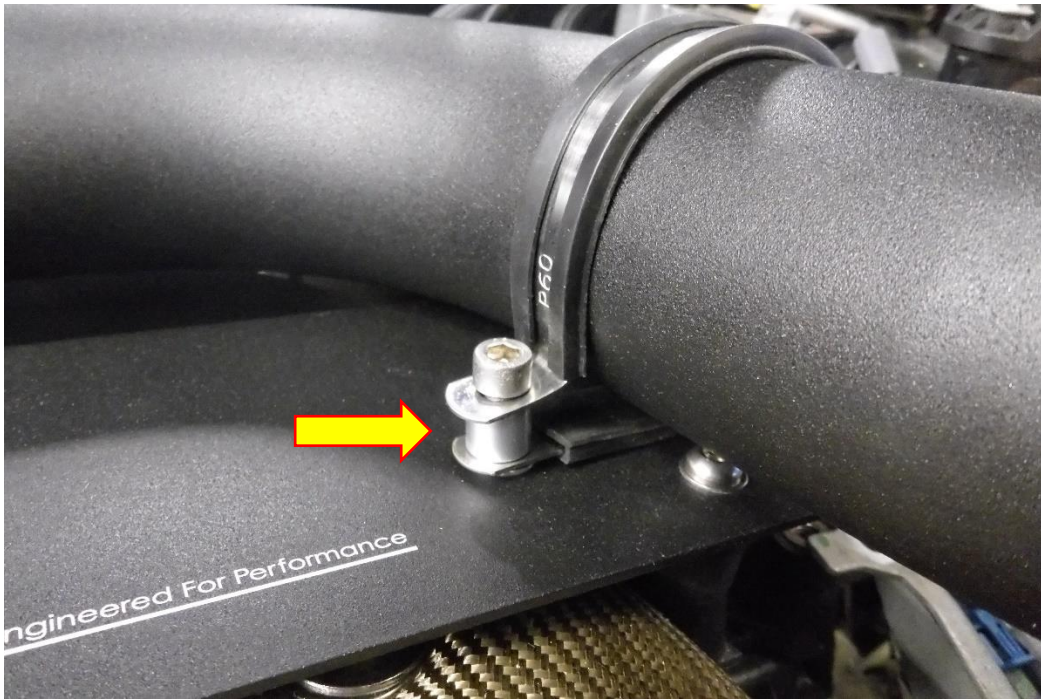


10. Push fit the MAF sensor loom locating clips into the oval holes in the mounting plate as shown in the picture below. You may need to use a sharp knife to trim the clip very slightly to get an improved fit.



11. Using a 5mm Allen key secure the long alloy hard pipe from the FMINDK53 kit using the supplied M6x25 cap head fasteners, M6 washers, M6 alloy spacers and 60mm P clips in the orientation shown in the picture below. Using a 3mm Allen key secure the MAF sensor to the long hard pipe using the supplied M4 fasteners and M4 washers. Now plug MAF loom back into the sensor and using an 8mm socket and ratchet tighten the hose clamp to the inlet hose.

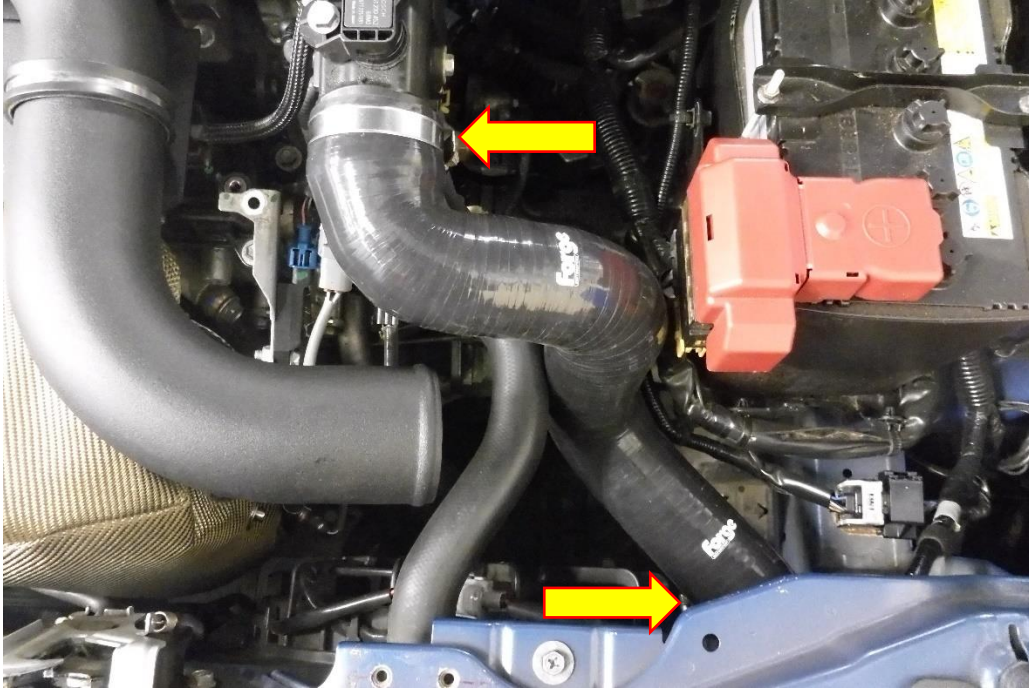




12. Re-fit the OE vacuum hose into the long hard pipe fitted in section 11.



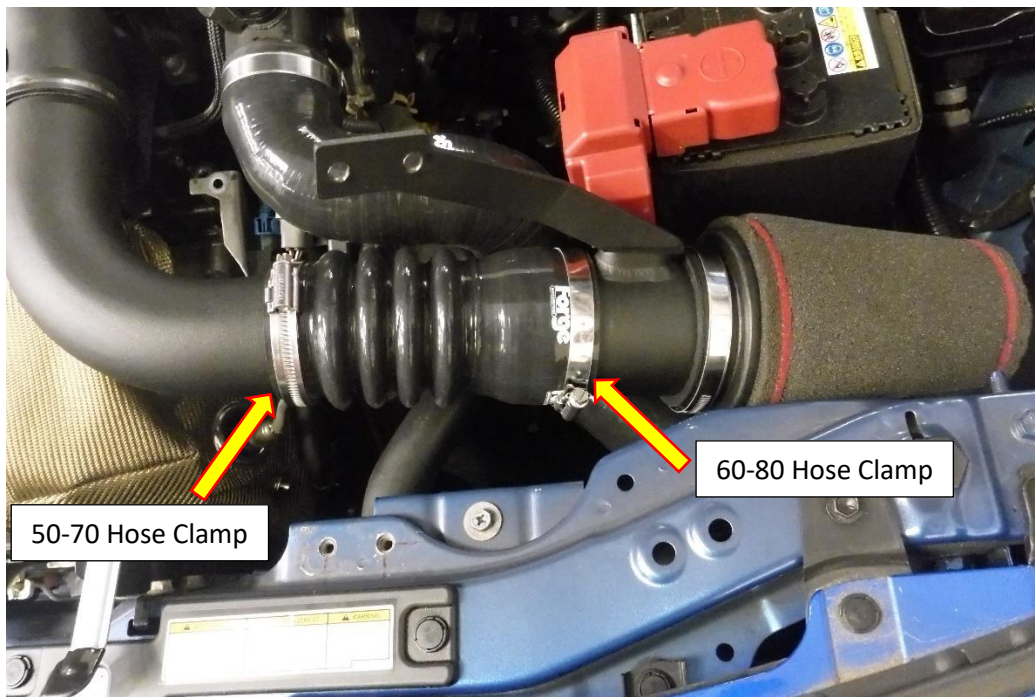
13. Using an 8mm socket and ratchet fit the supplied Forge silicone boost hose in replacement of the original boost hose, use the original hose clamps to do this.



14. Using a 5mm Allen key attach the mounting bracket to the small hard pipe using the supplied 2X M6x8 fasteners and M6 spring washers. Attach the filter from the FMINDK53 kit to the hard pipe as shown in the picture below, but do not tighten the hose clamp at this stage.



15. Fit hose #2126 to both hard pipes in the same orientation as shown in the picture below and loosely attach the 50-70mm hose clamp at the long hard pipe end of the silicone hose and the 60-80mm hose clamp to the short hard pipe end of the silicone hose.



16. Turn the short hard pipe round till the mounting bracket lines up with the with the treaded holes for the air duct from step 3. Using a 10 mm socket and ratchet secure the bracket using the original M6 fasteners.



17. Adjust the silicone hose and filter if needed to the preferred orientation the using a 7mm socket and ratchet, now tighten all 3X hose clamps.



18. That is the installation of FMINDK53 complete, perform a spanner check in all areas which have been worked on then take the vehicle for a test drive and enjoy your new Forge Motorsport product.



Check out www.forgemotorsport.co.uk
and www.forgemotorsport.com
For a full range of performance products for your vehicle.

*If you have any questions or concerns about this product
or anything else, please feel free to contact your local or preferred
Forge Motorsport Dealer/Installer or you may contact us directly.*

Forge Motorsport UK (+44)1452 380999
Forge Motorsport USA (407)-447-5363
Forge Motorsport ASIA +886-4-22516887

info@forgemotorsport.co.uk
sales@forgemotorsport.com
sales@forgemotorsport.asia

